



**Orchestrate Business Excellence with  
Whizible Integrated Project Management Solution**

# Are You in the Business to Manage

**Projects  
Agile-Waterfall**

**Human  
Resources –  
onsite/ remote**

**Diverse  
Skills**

**Resource  
Time -  
Tasks**

**FP, T&M or  
Outcome-  
based Billing**

**Revenue Growth  
& Profitability  
Improvement**



**Whizible providing end-to-end project  
management and decision-making support  
solution - 24/7**

# You Need One, Integrated, End-to-End Solution



# Whizable Benefits All Stakeholders...

## C-Suite Leaders

- ✓ Use C-Suite Dashboards for tracking the 'Integrated Big picture'
- ✓ No more Tools silos
- ✓ Increase predictability
- ✓ Avoid Revenue leakage
- ✓ Make strategic decisions guided by real-time data
- ✓ Save time spent to micromanage project operations
- ✓ Spend more time on organizational growth

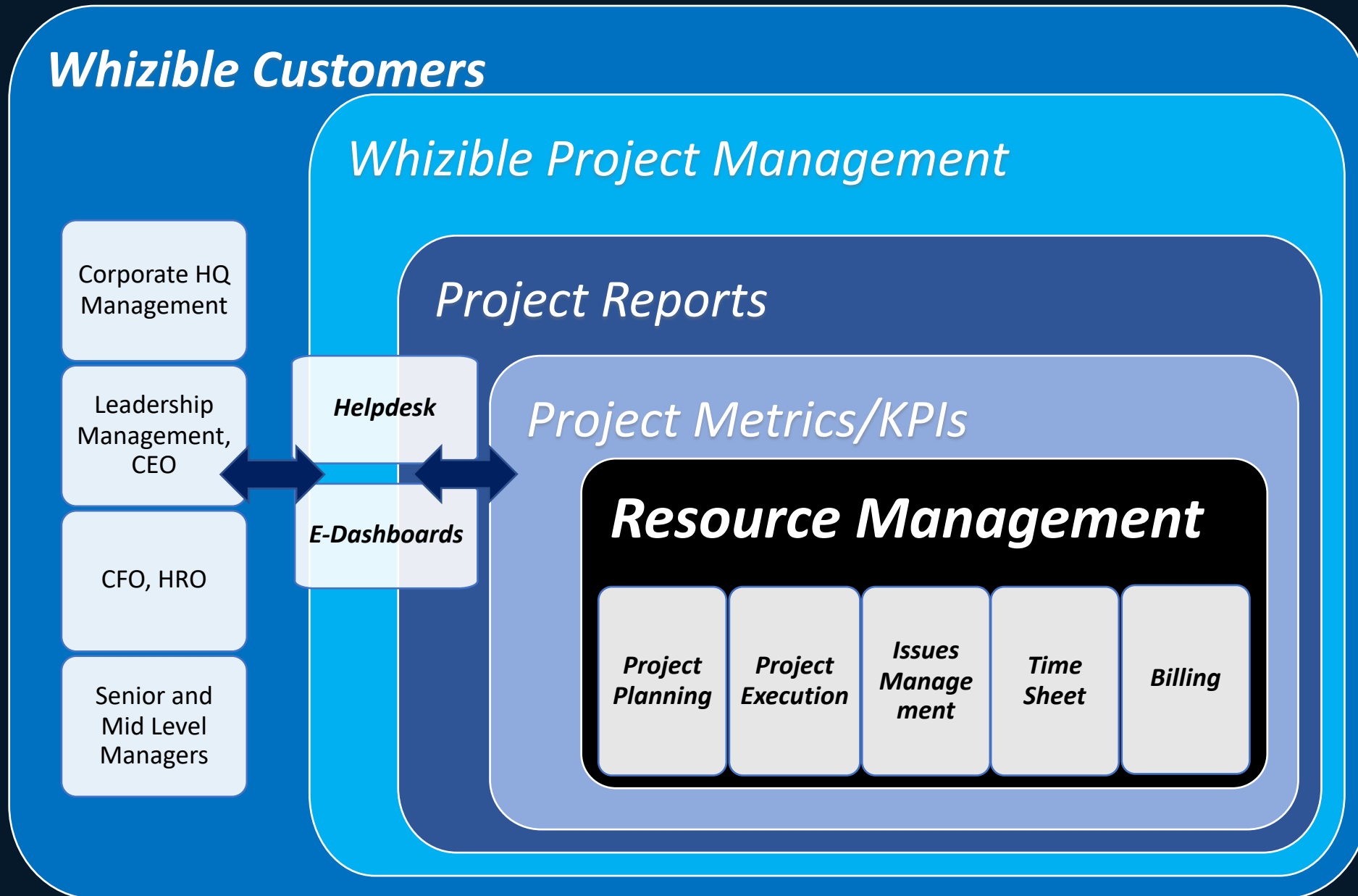
## Project Managers

- ✓ Access real-time PMO Dashboards to monitor all projects and initiate quick corrective actions
- ✓ Manage project operations and improve project delivery
- ✓ Decisions based on data
- ✓ Avoid escalations
- ✓ Spend more time on ensuring customer satisfaction
- ✓ Provide timely and real status to leadership

## Project Teams

- ✓ Plan and perform better across all assigned projects
- ✓ Improve individual performance and project service delivery
- ✓ Facilitate on-time project delivery
- ✓ Help in benchmarking
- ✓ Skill & workload management

# ...Whizable Benefits All Stakeholders





# Key Features to Manage Projects, Quality, Timeline

## Project Management



- Initiation to Project Closure Coverage
- Agile & Waterfall
- Track Project Risks
- Customized Business Dashboards

## Task Management



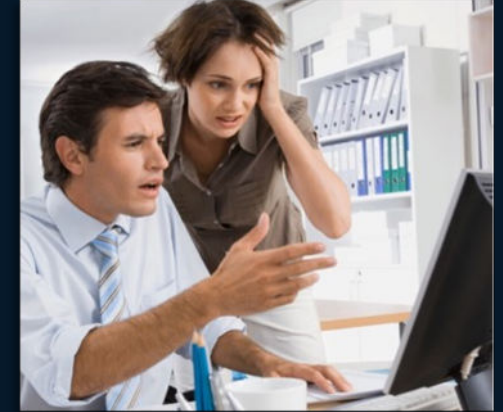
- MS Project Integration
- Upload Tasks from Excel
- Gantt & Dependency
- SCRUM Methodology integrated

## Resource Management



- Maintain Resource Pools
- Allocation Process
- Track Resource Utilization effectively
- Track Resource Loading
- Predict & Plan Skills

## Issues Management



- Integrated with Projects
- Configure Various types
- Status Workflow
- Manage SLA with templates
- Configure Custom Layouts and fields

# Features to Manage People, Skill and Time linked to ROI

## Helpdesk



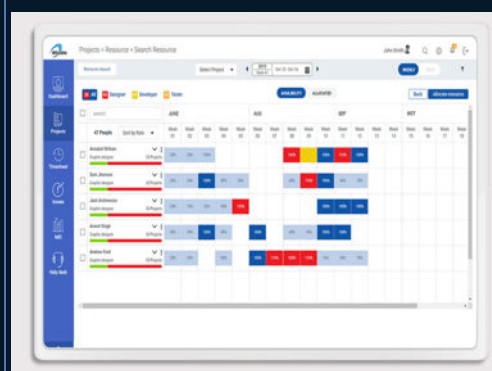
- Independent to Projects
- Open to Customers
- Manage SLA
- Better service to customers

## Timesheets



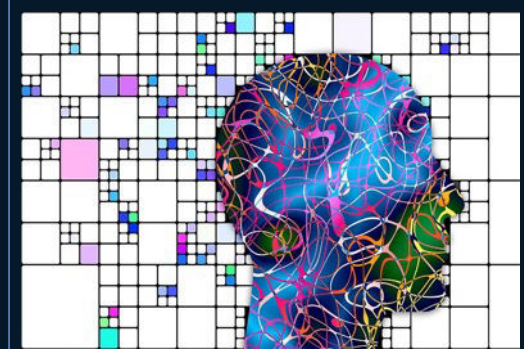
- Enter Daily/Weekly
- Planned and Unplanned Activities
- Expense Management
- Timesheet Approval
- NLP & BOT enabled

## Reports/ Metrics



- Standard Reports
- Custom Query Builder
- Custom Report Writer
- Custom Metric Builder
- Output in RTF/XLS/PDF

## Business Intelligence



- Standard Dashboards
- Build your own Custom Dashboards
- Ability to use your own queries and build custom dashboards

## Why Choose Us



Only integrated solution which goes beyond project management and helps to achieve your business goals by improving topline & bottomline.





# Whizible Matchless Performance backed by Data



52K+

Projects Managed



4M+

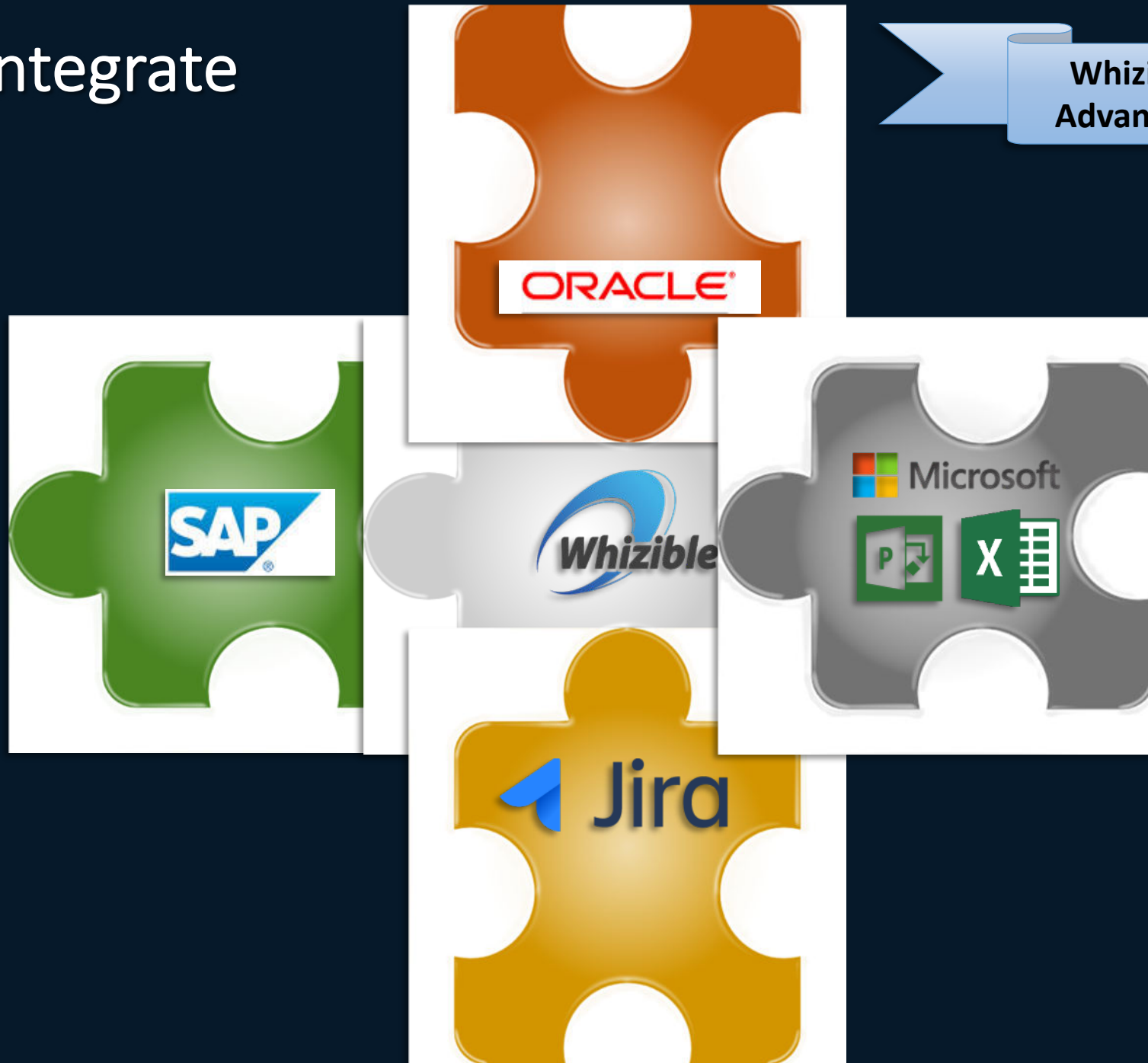
Tasks



180B+  
USD

Project Worth

# Easy to Integrate



Whizible  
Advantage

# Best in Class Cloud Infrastructure & Security



- Whizible is hosted in Azure cloud infrastructure in Microsoft datacenters, and is designed to offer the performance, scalability, security, and service levels that enterprise customers expect
- Whizible leverages the Azure Backup and Restore services for data which is encrypted
- Azure is supported by
  - 1B+ USD investment in security R&D and 3,500 cyber security experts
  - 90 compliance certifications, including over 50 specific to global regions – countries
- Azure services are in alignment with ISO 27001 and PCI DSS, including Microsoft's physical datacenters
- Refer the Azure security, privacy & compliance details [here](#)



# Testimonial



*Ajay Deshmukh*  
*Program Manager*

*The key strength of the product is in the underlying framework that enables customization of incremental business requirements in quick turn-around time and in a cost-effective way.*



# Testimonial



*Sunil Gupta*  
Founder, CEO & Director

*Whizible is our backbone wherein we manage all our project, all our issues, our customers use this for helpdesk.*

*For a software product and projects organization scaling their business for growth, I would recommend Whizible to be the primary information infrastructure and decision support for all the delivery operations. Without Whizible , it would have been very difficult to manage large number of projects.*

# Testimonial



*Sanjay Gupta*  
Chief Operating Officer

*We have been an ardent and committed user of Whizible and have deployed it to manage pretty much all the Execution processes of our company.*

*All delivery milestone reviews happen only thru Whizible and all managers including our CEO see the Whizible dashboards and reports to manage the business. We have recently integrated Whizible with JIRA – the issue tracking software that some of our customers use. This has allowed us seamless capture of all critical data at its source without the need for customers to change the way they work..*

# Industry Verticals we focus



**IT Services**



**Professional  
Services**



**Engineering  
Services**



**BFSI**

# IT Services

**Quinnox**  
accelerate success

**FUJITSU**

**ds**  
software

**C2LBIZ**  
CONCEPT TO LIVE

**wipro**

**INNOVAL**  
Value delivered thro innovations

**HEXANIKA™**

**NSE**  
NSEIT

**hi**  
**HEXAWARE**

**e-Emphasys**

**SunTec™**

**Laurus**  
Infosystems

**Hitachi**  
Consulting

**microlink®**

**CRM IT®**  
Customer Success Partner

**UPSIDE**  
LEARNING



# Engineering Services



JOHN DEERE



TATA CONSULTING ENGINEERS LIMITED

BEHR



TATA AUTOCOMP SYSTEMS LIMITED



# Banking and Financial Services





**Integrated Platform**  
helps you manage  
operations and  
collaboration between  
dispersed teams.

Improves **Customer  
Satisfaction** by giving  
customers Realtime  
visibility on their  
projects.

Tracks **Resource  
Utilization**, so that  
you  
can optimize.

One view of Critical  
Information for your  
business decisions,  
that  
would otherwise  
have to  
be collated from  
discrete systems.

Facilitates **Process  
Implementation &**  
helps  
you in  
Institutionalization

**Effective Project  
Management**  
prevents  
operational delays and  
overruns that effect  
Project Profitability.



+91 8554 983315

+91 20 67447000

info@whizible.com



/whiziblepms

www.whizible.com